



NARELLAN VALE PUBLIC SCHOOL
Waterworth Drive, Narellan, NSW, 2567
Postal Address: P.O.Box 3156 Narellan, 2567
Ph: (02)4647 5291
Fax: (02)4647 4507
Website: www.narellanva-p.schools.nsw.edu.au
Email: narellanva-p.school@det.nsw.edu.au

Principal's Message

Dear Parents/Carers,

Welcome to our Term 2, Week 2 newsletter. Welcome to 3B's teacher Zena Homsy and Macolata Ross Purple class teacher and Mrs Lynne Cullen and Mrs Donnah Robinson who have taken over 1B. We are pleased to have Ms Wendy Corton back at NVPS for 3 days per week.

A big thank you to all of the student leaders and students, staff and community members who attended Camden memorial Anzac march on Anzac Day. Thank you to Mrs McIntosh for your organisation of the march and school's Anzac memorial service. We were honoured to have local ex serviceman Mr John Reddington in attendance.

School has been a hive of activity this week!

Gala Day trials have been held and teams selected. Coaches and the students are all excited about the upcoming Gala Days.

NVPS held our first Three Way Conference on Monday this week. It is not too late to book in for next Monday 9th May to meet your child's teacher and learn about their learning from their teacher and your child too!

Tuesday was Autism Awareness Day and NVPS looked like a blue sea of students and staff dressed in blue. Students participated in activities aimed at raising their awareness of autism. All students thoroughly enjoyed themselves and \$1446.00 was raised and the funds will help to buy more equipment for the Support Unit.

The 3-6 Cross Country carnival went ahead on Thursday after being postponed due to the wet weather. The sun shone for us. Ribbons for place getters will be awarded at next Thursdays assembly at 2pm. Congratulations to all the students for participating and trying their best.

A big shout out to our P&C Fundraising committee and volunteers for a big week. The Mothers' Day stall on Monday and the sausage sizzle on Thursday. We are very fortunate to have such a committed and hardworking P&C.

Students in Years 3 and 5 will be sitting their NAPLAN assessments next week. These National Assessments in Literacy and Numeracy provide parents, students and teachers with valuable information and help inform the students next steps in learning.

I would like to wish all of the mothers and grandmothers a very happy mothers' day for Sunday!

Have a great fortnight!
Michelle Sarjana
PRINCIPAL

2022 DATES TO REMEMBER

Term 2

May

- | | |
|------------------|-----------------------|
| 9 th | 3 Way Conferences |
| 12 th | Whole School Assembly |
| 25 th | Zone Cross Country |
| 27 th | K-2 Fun Run |
| 30 th | School Photos |

June

- | | |
|-----------------|---------------|
| 6 th | School Photos |
|-----------------|---------------|

*On behalf of the Narellan Vale family,
together we pay respects to our Elders
past, present and emerging.
We learn and grow on the lands of the
Dharawal people who are the traditional
custodians of the land on which we learn
upon.
We promise to care for the flora and
fauna of the Dharawal lands.
We acknowledge all members of the
Narellan Vale community.*

WHO IS WHO

Hi my name is Kellie Henry and this year I am teaching all grades from Kindergarten to Year 6 for an hour each week. I have been teaching for 30 years and I have been lucky enough to spend 20 of them here at Narellan Vale where I have been a part of this wonderful community. All 3 of my children have enjoyed attending this school and the high school next door. Teaching and spending time with my family are two of my favourite things. I also enjoy swimming and stretching out practising Yin Yoga for relaxation. Kayaking is another sport I love to do with my family because you can get really close to Marine life and be part of nature. My husband and daughter started surfing four years ago with me. We spend most weekends chasing waves. If we are lucky, we get to paddle with dolphins and the occasional seal. I have four grandchildren with whom I spend as much time as I can with every week and I absolutely love walking our miniature poodle Ollie.



WHO IS WHO – STUDENT LEADERS

Name: Thomas Colbert

Role in Leadership Team: Vice Captain

Hobbies/Interests: I enjoy doing sports like Soccer and Karate. I love riding my scooter at the skate park and solving Rubiks cubes.

What do you bring to the school in your leadership role? I am respectful and kind to all students and staff. I am a hard working student that will lead the school with pride.

Best experience at NVPS: My best experience at NVPS is when I got the Vice Captain role.

Dreams for the future: When I grow up I would like to be a teacher or do something to do with sports and animals.

Message to NVPS students: I am so excited to be your Vice Captain this year, if you try your hardest you could be on the leadership team as well.

CONGRATULATIONS



Congratulations to Amara T and Lily J on being selected in the Macarthur Zone Netball Team to compete at the Sydney South West Netball Championships.

SCHOOL PHOTOS 2022

School Photographs will be taken on **30th May and Monday 6th June**. All children are to wear their summer uniform. More information will be available closer to the day.



STEWART HOUSE DONATION DRIVE




Please read about Stewart House. A charity that supports children in need. They are seeking \$2.00 donations.

Envelopes will be sent home with children.

CHANGE OF DETAILS



Have you recently moved or changed your phone number? Please update all changes to your contact details ASAP to enable us to have the most updated information in the event of an emergency.



CAMDEN COUNCIL
SCHOOL SAFETY PROGRAM

Road Safety Around Schools

When travelling to or from school

1

Follow the road rules and signs

They are there to help provide a safe environment. No one is exempt from following the road rules.

2

Do not expect to park close to your school

Drop off and pick up times at schools are busy. Quite often, simply taking away the expectation of parking as close as possible to your school will bring you less stress and anxiety.

Plan on parking slightly further away from the school and walking. Use this time to talk to your child about their day. Remember to hold your child's hand while you walk and keep them safe.

3

Know the parking restrictions around your school

Visit your school during a quiet time of the day or on the weekend. Take your time to walk around and look at the road and parking signs. Become familiar with where you are legally able to stop and park. Have a look at the streets and area around your school, you may find alternative pick up and drop off areas that aren't as busy as the school frontage.

Remember

Road safety is the responsibility of all road users. Be considerate of others, take your time and don't rush. Don't put others at risk by not complying to the parking restrictions or by performing illegal U-turns.

Be considerate to the residents that live near schools. Don't park across or block their driveway.



70 Central Ave, Oran Park 2570



4654 7777

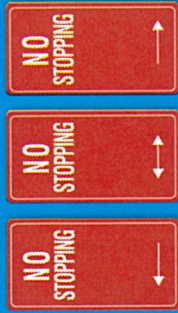


camden.nsw.gov.au



camden

Park legally around schools and keep our kids safe



NO STOPPING

You **MUST NOT** stop here for any reason. You cannot pick up, drop off or queue in a No Stopping area.

If times of operation are shown on the sign, the restriction applies only at that time.

Fine exceeds \$349 and 2 demerit points



NO PARKING/ KISS AND RIDE

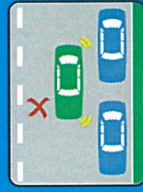
You can stop in this zone for a **maximum of 2 minutes** to drop off or pick up passengers or goods.

You must stay within 3 metres of your vehicle at all times.

These signs may be supplementary signposted with a blue "Kiss and Ride" sign.

Holders of a Mobility Parking Scheme permit are able to stop for a maximum of 5 minutes.

Fine exceeds \$194 and 2 demerit points



DOUBLE PARKING

A driver **MUST NOT** stop on the road adjacent to another vehicle at any time to pick up or drop off passengers.

Passengers should never leave a vehicle that is double parked.

Fine exceeds \$349 and 2 demerit points



BUS ZONE

You **MUST NOT** stop within a Bus Zone at any time. You cannot pick up or drop off passengers in a Bus Zone.

If times of operation are shown on the sign, the restriction applies only at that time.

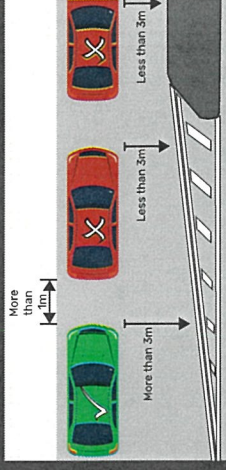
Fine exceeds \$349 and 2 demerit points

Frequently asked questions

Can I park near double centre line marking?

No. It is illegal to park a vehicle within 3 metres of a double centre line marking or dividing strip

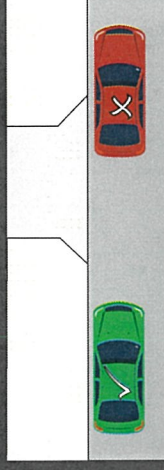
Fine exceeds \$349 and 2 demerit points



Can I stop on or across a driveway?

No. A driver **MUST NOT** obstruct access by vehicles or pedestrians to a driveway at any time.

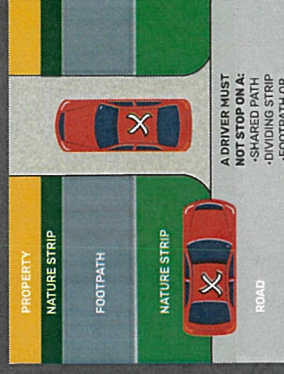
Fine exceeds \$349 and 2 demerit points



Can I stop on a path or nature strip?

No. A driver **MUST NOT** stop on a cycle path, footpath, shared path or nature strip adjacent to a length of road in a built-up area.

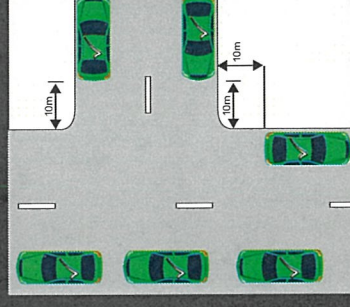
Fine exceeds \$464 and 4 demerit points



Can I park near an intersection?

You **MUST NOT** stop within 10 metres of an intersection.

Fine exceeds \$464 and 2 demerit points





BREAKFAST MENU IS BACK!

Fresh Start Canteens is very excited to be servicing Breakfast again in the morning at the Canteen.

Breakfast can only be purchased across the counter each morning before class.

We are very excited serving breakfast again to you all.

Please support the canteen that supports your school!

Fresh Start Canteens is operating with a Covid safe plan and will be strictly adhering to the rules set out by the government and the Department of Education.

Please note in the event that the staff are affected by covid the canteen will advise accordingly and close immediately if required.



THANK YOU AND SEE YOU ALL SOON!

Fresh Start Canteens

FRED CHANTERY
XPRESSO MOBILE CAFÉ | MACARTHUR SYD

Xpresso!
Mobile Cafe

MACARTHUR@XPRESSO.COM.AU
T: 1300 655 559 | M: 0419 258 746
f FACEBOOK.COM/XPRESSOMOBILECAFE | XPRESSO.COM.AU

THE BEST VANS. THE BEST COFFEE.
THE BEST DECISION YOU WILL EVER MAKE

AUSTRALIAN FRANCHISE REGISTRY FCA

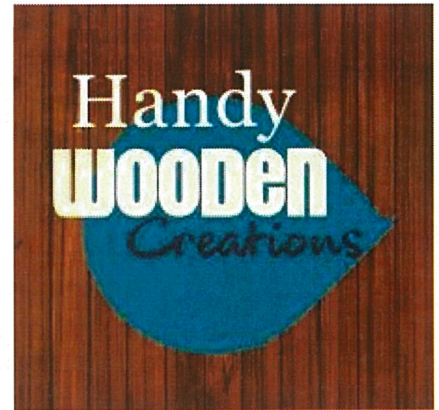
2017 topfranchise CATEGORY TOP 10
AUSTRALIA'S BEST RATED FRANCHISES

Belinda J Vine
Gymnastics Manager

T 0447 654 481
E belinda@dvinegymnsports.com.au



W dvinegymnsports.com.au
E info@dvinegymnsports.com.au
P PO Box 7448 Mt Annan NSW 2567
A Unit 1, 11 McPherson Street
Smeaton Grange NSW 2567



CJ Travel Services



GKR KARATE
KARATE FOR EVERYONE



Creating a Love of Learning.

